

Multi-Pin Power Cylindrical Connectors



Primary Markets:

- ▶ Combat Vehicles
- ▶ Industrial Machinery
- ▶ Railway/Transit
- ▶ HMI Lighting



SPACECRAFT
COMPONENTS CORP.

SPACECRAFT AT A GLANCE

Your Connector Consultant
Since 1962



Founded in 1962, Spacecraft is a family-owned, leading manufacturer and distributor of cylindrical connectors for the railways/transit, military, aerospace and various harsh environment markets.

As a Manufacturer, Spacecraft's core focus is manufacturing reverse bayonet connectors geared towards railway and transit applications. Our extensive engineering and manufacturing experience with reverse bayonet connectors provides us with the opportunity to offer a broad range of derivative cylindrical products in a short period of time with an assurance of exceptional quality.

As a Distributor, Spacecraft has developed key partnerships with world-class manufacturers whose products encompass MIL-SPEC and harsh environment industrial connectors. We are an authorized MIL-STD-790 value-added assembler for our principal connector manufacturers, such as Souriau, Reiku, Corsair, Sunbank, Astro Tool Corp., Mencom and Ulti-Mate. We stock a wide and deep variety of QPL components which enables us to provide a vast assortment of completed QPL connectors within a three-day turnaround.

As an Organization, Spacecraft prides itself on providing consultative service by utilizing our greatest asset: Our people!

Spacecraft invites you to tour our best-in-class facility located in North Las Vegas, Nevada, USA.

Spacecraft's Core Values

- MIL-STD-790 Certified
- Over 9 Million Connectors in Inventory
- Technical Solutions Oriented
- A Consultative Sales Team
- Vertically Integrated
- Supporter of the Buy American Act



Exceeding Your Quality Expectations

Spacecraft Components Corp. warrants to the original purchaser that it will correct by replacement any defect in workmanship or in-operation of any component purchased from Spacecraft Components Corp. for the life of the equipment in which the component is originally and properly installed. This agreement and warranty supersedes all other warranties expressed or implied.



CIDS (Connector Identification System)

Your Online Source for MIL-SPEC Cylindrical Connectors

Mission Statement

To provide a work environment where our employees can meet their potential and thrive in an atmosphere of excellence by utilizing their strengths and attributes towards supporting our customers, thereby providing superior products and exceptional service which helps our customers gain a competitive advantage in their markets.

Locations

Nevada Headquarters 702.851.7600
 Florida Office 954.748.4540
 Arizona Office 623.580.1162
 Mexico Office +52 442 341 69 63
 Italy Office +39 (335) 719.4512



- Access to MIL-SPEC Data Sheets in an Instant
- Identify Crimp Tools for Your Contacts
- Identify the Mating Connector
- Identify the Accessories for Your Connector



Distributed by:
Eastern Connector Specialty

Phone: 860-355-8100
Fax: 860-350-5411

Email: sales@easternconnector.com
Web: www.easternconnector.com

MULTI-PIN CYLINDRICAL POWER CONNECTORS

© 2012 Spacecraft Components Corp., North Las Vegas, Nevada 89032

Catalog 102 Table of Contents

| | |
|---|--------|
| MIL-DTL-5015 Series I Solder Contact Connectors | 1A-1 |
| MIL-DTL-5015 Series II Crimp, Front Release Contact, Connectors..... | 2A-1 |
| MIL-DTL-5015 Series III Crimp, Rear Release Contact, Connectors | 3A-1 |
| MIL-DTL-5015 Connector Accessory Quick Reference | 4A-1 |
| SWL Series Connectors | 5A-1 |
| SWL Series Connector Accessory Quick Reference | 6A-1 |
| SWLD Series Connectors | 7A-1 |
| SWLD Series Connector Accessory Quick Reference | 8A-1 |
| MIL-DTL-5015 Technical Data | 9A-2 |
| MIL-DTL-5015 Solder Contacts for Series I | 9A-3 |
| MIL-DTL-5015 Crimp Contacts for Series I..... | 9A-4 |
| Crimp Contact Adapters | 9A-8 |
| Coaxial Contacts..... | 9A-11 |
| MIL-DTL-5015 Crimp Contact Tooling for Series I..... | 9A-12 |
| Insert Configurations by Shell Size | 10A-1 |
| Thermocouple Contacts & Insert Arrangements..... | 10A-17 |
| Insert Drawing by Number of Contacts..... | 10A-28 |
| Cross Reference/Index | 11A-1 |



We've Got You Covered



Contact
Spacecraft's
Consultative Sales Team
for Ordering Information



YOUR
**CONNECTOR
CONSULTANT**
SINCE 1962

 **SPACECRAFT
COMPONENTS CORP.**

860-355-8100

SECTION 7A

SWLD SERIES

CONNECTORS

- Equivalent to the Amphenol/Bendix QWLD as well as the ITT Cannon CWLD Series.
- HIGH CURRENT CAPACITY for power distribution network and inputs into large equipment.
- RUGGED CONSTRUCTION consists of high strength machined aluminum shells with a choice of either a conductive or non-conductive finish. Shock resistant resilient inserts. Gaskets and/or "O" rings at appropriate surfaces for perfect weathertight connections.
- EASE OF OPERATION with fast coupling, double stub threads, left hand accessory threads and single keyway mating.
- INSERT AVAILABILITY - Both MS and custom insert patterns available to accommodate a wide variety of multiconductor cables.

7A

OPERATING CHARACTERISTICS

| CONDITION | CONFIGURATION | DESCRIPTION | REFERENCE |
|---|---------------|---|---|
| DURABILITY | MATED | 500 complete mating/unmating cycles | MIL-DTL-22992 |
| FLUID IMMERSION | UNMATED | 20 hours immersion in hydraulic fluid and lubricating oil | MIL-DTL-22992 |
| HIGH IMPACT | MATED | Nine hammer blows from 1, 3 and 5 feet, three each in three axes on mounting panel | MIL-STD-202 method 207 |
| MOISTURE RESISTANCE (Cable mounted connectors) | MATED | Ten complete 24 hour cycles of +25°C to +65°C temperature at 90% to 98% humidity | MIL-STD-202 method 106 |
| SALT SPRAY (CORROSION) | UNMATED | 48 hour exposure to atomized 5% saline solution at +35°C | MIL-STD-1344 method 1001 |
| THERMAL SHOCK | UNMATED | Five complete one hour temperature cycles of -55°C to +125°C | MIL-STD-1344 method 1003 test condition |
| VIBRATION | MATED | 10 TO 55 Hz, 06 inch total excursion in 1 minute cycles for 6 hours 55 to 2000 Hz, 10G peak amplitude sweep | MIL-STD-1344 method 2005 |
| WATER IMMERSION | MATED | 4 hours immersion at 1 atmosphere pressure differential | MIL-DTL-22992 |

SWLD SERIES

ORDERING INFORMATION

MIL-DTL-22992 CLASS C, J & R

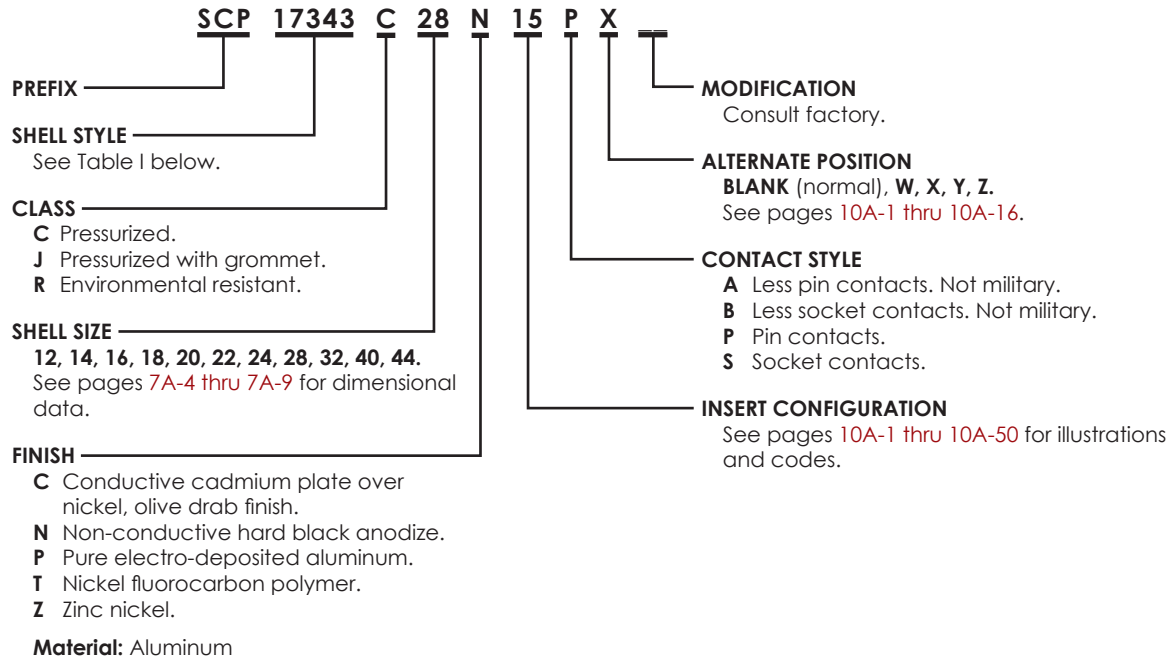


TABLE I. SHELL STYLE

| SHELL STYLE | DESCRIPTION | SEE PAGE |
|-------------|--------------------------------|----------|
| SCP17343 | Wall mount receptacle | 7A-4 |
| SCP17344 | Plug | 7A-5 |
| SCP17345 | In-line receptacle | 7A-6 |
| SCP17346 | Box mount receptacle | 7A-7 |
| SCP17347 | Jam nut receptacle, wall mount | 7A-8 |
| SCP17348 | Jam nut receptacle, box mount | 7A-9 |

SWLD SERIES

ORDERING INFORMATION

SCP194 0 28 - 15 P B88

SERIES PREFIX

SHELL STYLE

See Table I below.

SHELL SIZE

| | | | | | | | | | |
|------------|-----|-----|----|-----|----|-----|----|----|----|
| SWLD | 10 | 12 | 13 | 14 | 15 | 16 | 17 | 18 | 20 |
| MIL-C-5015 | 10S | 12S | 12 | 14S | 14 | 16S | 16 | 18 | 20 |

| | | | | | | | | |
|------------|----|----|----|----|----|----|----|----|
| SWLD | 22 | 24 | 28 | 32 | 36 | 40 | 44 | 48 |
| MIL-C-5015 | 22 | 24 | 28 | 32 | 36 | 40 | 44 | 48 |

INSERT CONFIGURATION

See pages 10A-1 thru 10A-50 for illustrations and codes.

CONTACT STYLE/ALTERNATE POSITION

This Series utilizes a single letter code for both Contact Style and Alternate Position. Select the code from the Table below. See pages 10A-1 thru 10A-16 for Alternate Positions available for each Insert Configuration.

| CODE | | ALTERNATE POSITION |
|------|--------|--------------------|
| PIN | SOCKET | |
| P | S | NORMAL |
| G | H | W |
| I | J | X |
| K | L | Y |
| M | N | Z |

MODIFICATION

- BLANK** Solder type contacts, silver plated (Standard).
- B68** Solder type contacts, plated .00005 gold over silver. Size 8, 4 and 1/0 contacts have filled solder pots.
- B75** Crimp type contacts, silver plated.
- B80** Less contacts.
- B81** Crimp type contacts, plated .0001 gold over silver.
- B82** Crimp type contacts for MIL-C-13777 cable, silver plated.
- B83** Crimp type contacts for MIL-C-13777 cable, plated .0001 gold over silver.
- B85** Crimp type contacts plated .00005 gold over silver.

The above modifications utilize connector shells with a non-conductive hard anodize finish Alumilite 225® over aluminum.

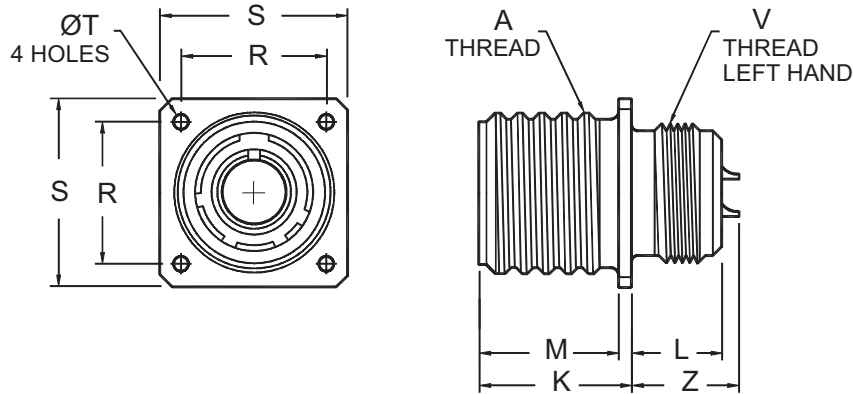
- B88** Solder contact, olive drab plating over nickel conductive finish.
- SLN** Self-locking coupling nut.

TABLE I. SHELL STYLE

| SHELL STYLE | DESCRIPTION | SEE PAGE |
|----------------|--------------------------------|----------|
| SCP1940 | Wall mount receptacle | 7A-4 |
| SCP1941 | In-line receptacle | 7A-6 |
| SCP1942 | Box mount receptacle | 7A-7 |
| SCP1943 | Jam nut receptacle, wall mount | 7A-8 |
| SCP1946 | Plug | 7A-5 |
| SCP1949 | Jam nut receptacle, box mount | 7A-9 |

WALL MOUNT RECEPTACLE SWLD SERIES

SCP1940
SCP17343

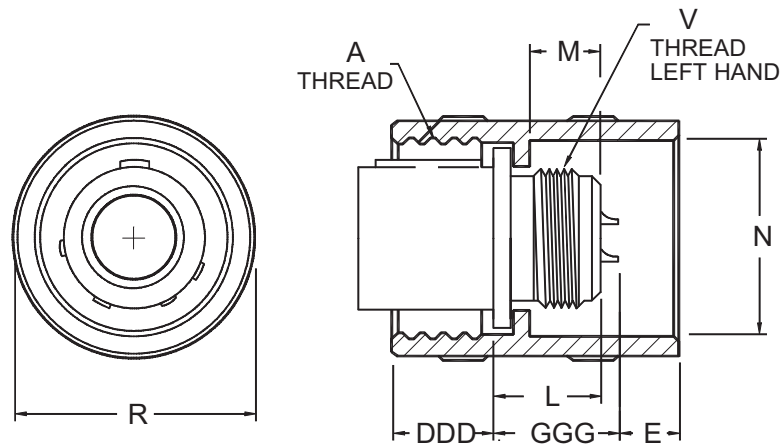


SCP1940* Environmental SCP17343* Environmental

| SHELL SIZE | A THREAD CLASS 2A | K +.021 -.020 [+0.53] [-0.51] | L ±.020 [±0.51] | M +.010 -.000 [+0.25] [-0.00] | R (TP) | S +.021 -.020 [+0.53] [-0.51] | T ±.005 [±0.13] | V THREAD CLASS 2A-LH | Z | |
|------------|----------------------|---|-----------------------|---|------------------|---|-----------------------|-------------------------|-----------------|-----------------|
| | | | | | | | | | MAX. | MIN. |
| | | | | | | | | | ② | (SIZE 0 ONLY) |
| 12 | .875-0.1P-0.2L-DS | .938 [23.83] | .640 [16.26] | .797 [20.24] | .906 [23.01] | 1.188 [30.18] | .150 [3.81] | .7500-20 UNEF | .726 [18.44] | NA |
| 14 | 1.0000-0.1P-0.2L-DS | .938 [23.83] | .640 [16.26] | .797 [20.24] | .969 [24.61] | 1.281 [32.54] | .150 [3.81] | .8750-20 UNEF | .726 [18.44] | |
| 16 | 1.1250-0.1P-0.2L-DS | .938 [23.83] | .640 [16.26] | .797 [20.24] | 1.062 [26.97] | 1.375 [34.92] | .150 [3.81] | 1.0000-20 UNEF | .726 [18.44] | |
| 18 | 1.2500-0.1P-0.2L-DS | .953 [24.21] | .625 [15.87] | .797 [20.24] | 1.156 [29.36] | 1.500 [38.10] | .177 [4.50] | 1.1250-18 NEF | .711 [18.06] | |
| 20 | 1.3750-0.1P-0.2L-DS | .953 [24.21] | .625 [15.87] | .797 [20.24] | 1.250 [31.75] | 1.625 [41.27] | .177 [4.50] | 1.2500-18 NEF | .711 [18.06] | .780 [19.81] |
| 22 | 1.5000-0.1P-0.2L-DS | .953 [24.21] | .625 [15.87] | .797 [20.24] | 1.375 [34.92] | 1.750 [44.45] | .177 [4.50] | 1.3750-18 NEF | .711 [18.06] | |
| 24 | 1.7500-0.1P-0.2L-DS | 1.047 [26.59] | .594 [15.09] | .859 [21.82] | 1.562 [39.67] | 2.000 [50.80] | .177 [4.50] | 1.6250-18 NEF | .617 [15.67] | .686 [17.42] |
| 28 | 2.0000-0.1P-0.2L-DS | 1.047 [26.59] | .594 [15.09] | .859 [21.82] | 1.750 [44.45] | 2.250 [57.15] | .177 [4.50] | 1.8750-16 UN | .617 [15.67] | |
| 32 | 2.2500-0.1P-0.2L-DS | 1.111 [28.22] | .530 [13.46] | .922 [23.42] | 1.938 [49.23] | 2.500 [63.50] | .209 [5.31] | 2.0625-16 N | .553 [14.05] | .622 [15.80] |
| 36 | 2.5000-0.1P-0.2L-DS | 1.111 [28.22] | .530 [13.46] | .922 [23.42] | 2.188 [55.58] | 2.750 [69.85] | .209 [5.31] | 2.3125-16 N | .553 [14.05] | .622 [15.80] |
| 40 | 2.7500-0.1P-0.2L-DS | 1.111 [28.22] | .703 [17.86] | .922 [23.42] | 2.375 [60.32] | 3.000 [76.20] | .209 [5.31] | 2.6250-16 UN | .553 [14.05] | .622 [15.80] |
| 44 | 3.0000-0.1P-0.2L-DS | 1.109 [28.17] | .703 [17.86] | .922 [23.42] | 2.625 [66.67] | 3.250 [82.55] | .209 [5.31] | 2.8750-16 UN | .797 [20.24] | .622 [15.80] |

Dimensions in brackets [] are in millimeters.

② For size 0 contacts only, increase Z dimension by .312 [7.92] for shell sizes 12 thru 40, and by .062 [1.57] for shell size 44.



SCP1946* Environmental
SCP17344* Environmental

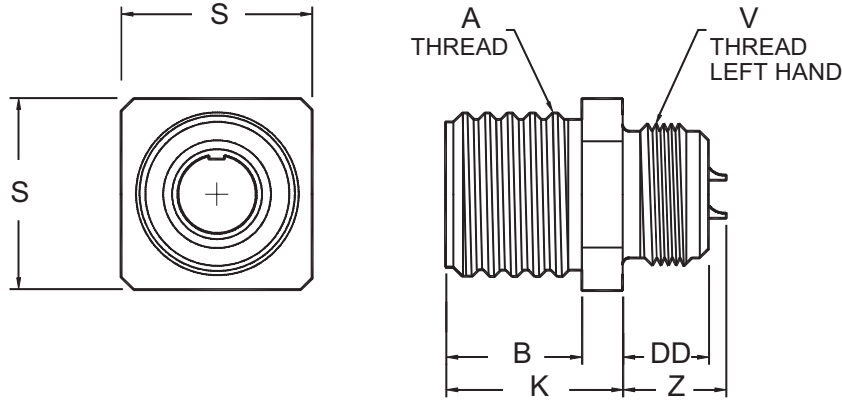
| SHELL SIZE | A THREAD CLASS 2B | E MAX. | L +.011 -.010 [+0.28] [-0.25] | M ±.031 [±0.79] | ØN +.010 -.001 [+0.25] [-0.03] | ØR MAX. | V THREAD CLASS 2A-LH | DDD | GGG MAX. |
|------------|----------------------|----------------|---|-----------------------|--|------------------|-------------------------|----------------------------|------------------|
| 12 | .875-0.1P-0.2L-DS | .100 [2.54] | .738 [18.75] | .529 [13.44] | .985 [25.02] | 1.156 [29.36] | .7500-20 UNEF | .655/.593 [16.64/15.06] | .898 [22.81] |
| 14 | 1.0000-0.1P-0.2L-DS | .100 [2.54] | .738 [18.75] | .529 [13.44] | 1.109 [28.17] | 1.281 [32.54] | .8750-20 UNEF | .655/.593 [16.64/15.06] | .898 [22.81] |
| 16 | 1.1250-0.1P-0.2L-DS | .150 [3.81] | .738 [18.75] | .529 [13.44] | 1.235 [31.37] | 1.469 [37.31] | 1.0000-20 UNEF | .655/.593 [16.64/15.06] | .898 [22.81] |
| 18 | 1.2500-0.1P-0.2L-DS | .275 [6.98] | .738 [18.75] | .529 [13.44] | 1.359 [34.52] | 1.563 [39.70] | 1.1250-18 NEF | .655/.593 [16.64/15.06] | .898 [22.81] |
| 20 | 1.3750-0.1P-0.2L-DS | .275 [6.98] | .738 [18.75] | .529 [13.44] | 1.485 [37.72] | 1.688 [42.88] | 1.2500-18 NEF | .655/.593 [16.64/15.06] | .898 [22.81] |
| 22 | 1.5000-0.1P-0.2L-DS | .275 [6.98] | .738 [18.75] | .529 [13.44] | 1.609 [40.87] | 1.844 [46.84] | 1.3750-18 NEF | .655/.593 [16.64/15.06] | .898 [22.81] |
| 24 | 1.7500-0.1P-0.2L-DS | .275 [6.98] | .800 [20.32] | .529 [13.44] | 1.859 [47.22] | 2.094 [53.19] | 1.6250-18 NEF | .655/.593 [16.64/15.06] | .898 [22.81] |
| 28 | 2.0000-0.1P-0.2L-DS | .275 [6.98] | .800 [20.32] | .529 [13.44] | 2.109 [53.57] | 2.344 [59.54] | 1.8750-16 UN | .655/.593 [16.64/15.06] | .898 [22.81] |
| 32 | 2.2500-0.1P-0.2L-DS | .275 [6.98] | .875 [22.22] | .529 [13.44] | 2.359 [59.92] | 2.594 [65.89] | 2.0625-16 N | .677/.610 [17.20/15.49] | .898 [22.81] |
| 36 | 2.5000-0.1P-0.2L-DS | .300 [7.62] | .875 [22.22] | .529 [13.44] | 2.609 [66.27] | 2.844 [72.24] | 2.3125-16 N | .701/.634 [17.80/16.10] | .898 [22.81] |
| 40 | 2.7500-0.1P-0.2L-DS | .100 [2.54] | 1.041 [26.44] | .717 [18.21] | 2.922 [74.22] | 3.156 [80.16] | 2.6250-16 UN | .679/.618 [17.25/15.70] | .898 [22.81] |
| 44 | 3.0000-0.1P-0.2L-DS | .109 [2.77] | 1.041 [26.44] | .717 [18.21] | 3.172 [80.57] | 3.406 [86.51] | 2.8750-16 UN | .679/.618 [17.25/15.70] | 1.062 [26.97] |

Dimensions in brackets [] are in millimeters.

7A

IN-LINE RECEPTACLE SWLD SERIES

SCP1941
SCP17345

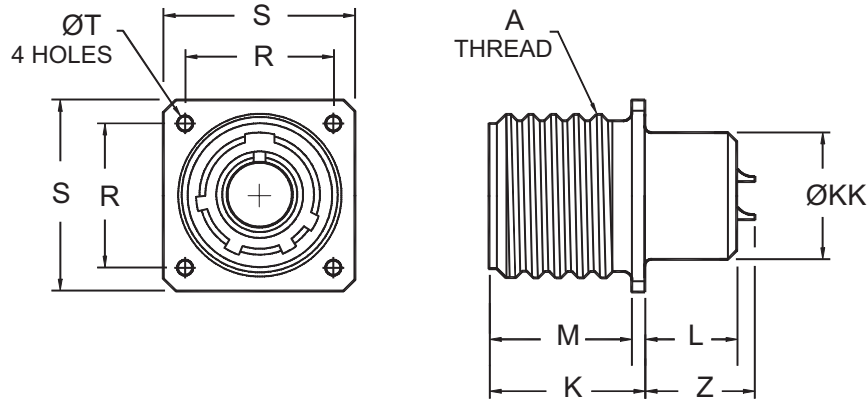


SCP1941* Environmental
SCP17345* Environmental

| SHELL SIZE | A THREAD CLASS 2A | B +.016 -.000 [+0.41] [-0.00] | ØD +.005 -.010 [+0.13] [-0.25] | K +.021 -.020 [+0.53] [-0.51] | S +.021 -.020 [+0.53] [-0.51] | V THREAD CLASS 2A-LH | DD ±.010 [±0.25] | Z | |
|------------|----------------------|---|--|---|---|-------------------------|------------------------|-----------------|-----------------|
| | | | | | | | | MAX. | MIN. |
| | | | | | | | | Ⓣ | (SIZE 0 ONLY) |
| 12 | .875-0.1P-0.2L-DS | .688 [17.48] | .567 [14.40] | .938 [23.83] | 1.000 [25.40] | .7500-20 UNEF | .641 [16.28] | .726 [18.44] | NA |
| 14 | 1.0000-0.1P-0.2L-DS | .688 [17.48] | .692 [17.58] | .938 [23.83] | 1.094 [27.79] | .8750-20 UNEF | .641 [16.28] | .726 [18.44] | |
| 16 | 1.1250-0.1P-0.2L-DS | .688 [17.48] | .817 [20.75] | .938 [23.83] | 1.281 [32.54] | 1.0000-20 UNEF | .641 [16.28] | .726 [18.44] | |
| 18 | 1.2500-0.1P-0.2L-DS | .703 [17.86] | .942 [23.93] | .953 [24.21] | 1.375 [34.92] | 1.1250-18 NEF | .625 [15.87] | .711 [18.06] | |
| 20 | 1.3750-0.1P-0.2L-DS | .703 [17.86] | 1.068 [27.13] | .953 [24.21] | 1.500 [38.10] | 1.2500-18 NEF | .625 [15.87] | .711 [18.06] | .780 [19.81] |
| 22 | 1.5000-0.1P-0.2L-DS | .703 [17.86] | 1.192 [30.28] | .953 [24.21] | 1.625 [41.27] | 1.3750-18 NEF | .625 [15.87] | .711 [18.06] | |
| 24 | 1.7500-0.1P-0.2L-DS | .766 [19.46] | 1.317 [33.45] | 1.016 [25.81] | 1.875 [47.62] | 1.6250-18 NEF | .625 [15.87] | .648 [16.46] | .717 [18.21] |
| 28 | 2.0000-0.1P-0.2L-DS | .766 [19.46] | 1.536 [39.01] | 1.016 [25.81] | 2.125 [53.97] | 1.8750-16 UN | .625 [15.87] | .648 [16.46] | |
| 32 | 2.2500-0.1P-0.2L-DS | .703 [17.86] | 1.786 [45.36] | 1.078 [27.38] | 2.375 [60.32] | 2.0625-16 N | .563 [14.30] | .576 [14.63] | .655 [16.64] |
| 36 | 2.5000-0.1P-0.2L-DS | .703 [17.86] | 2.005 [50.93] | 1.078 [27.38] | 2.625 [66.67] | 2.3125-16 N | .563 [14.30] | .576 [14.63] | .655 [16.64] |
| 40 | 2.7500-0.1P-0.2L-DS | .703 [17.86] | 2.255 [57.28] | 1.078 [27.38] | 3.000 [76.20] | 2.6250-16 UN | .703 [17.86] | .576 [14.63] | .655 [16.64] |
| 44 | 3.0000-0.1P-0.2L-DS | .703 [17.86] | 2.545 [64.64] | 1.078 [27.38] | 3.250 [82.55] | 2.8750-16 UN | .703 [17.86] | .797 [20.24] | .655 [16.64] |

Dimensions in brackets [] are in millimeters.

Ⓣ For size 0 contacts only, increase Z dimension by .312 [7.92] for shell sizes 12 thru 40, and by .062 [1.57] for shell size 44.



SCP1942* Environmental
SCP17346* Environmental

| SHELL SIZE | A THREAD CLASS 2A | K +.021 -.010 [+0.53] [-0.25] | L +.020 -.030 [+0.51] [-0.76] | M +.010 -.000 [+0.25] [-0.00] | R (TP) | S +.021 -.020 [+0.53] [-0.51] | T ±.005 [±0.13] | ØKK +.011 -.010 [+0.30] [-0.25] | Z | |
|------------|----------------------|-------------------------------------|-------------------------------------|-------------------------------------|------------------|-------------------------------------|-----------------------|---------------------------------------|-----------------|-----------------|
| | | | | | | | | | MAX. | MIN. |
| | | | | | | | | | ② | (SIZE 0 ONLY) |
| 12 | .875-0.1P-0.2L-DS | .938 [23.83] | .640 [16.26] | .797 [20.24] | .906 [23.01] | 1.188 [30.18] | .150 [3.81] | .640 [16.26] | .738 [18.75] | NA |
| 14 | 1.0000-0.1P-0.2L-DS | .938 [23.83] | .640 [16.26] | .797 [20.24] | .969 [24.61] | 1.281 [32.54] | .150 [3.81] | .765 [19.43] | .738 [18.75] | |
| 16 | 1.1250-0.1P-0.2L-DS | .938 [23.83] | .640 [16.26] | .797 [20.24] | 1.062 [26.97] | 1.375 [34.92] | .150 [3.81] | .890 [22.61] | .738 [18.75] | |
| 18 | 1.2500-0.1P-0.2L-DS | .953 [24.21] | .625 [15.87] | .797 [20.24] | 1.156 [29.36] | 1.500 [38.10] | .177 [4.50] | 1.015 [25.78] | .723 [18.36] | |
| 20 | 1.3750-0.1P-0.2L-DS | .953 [24.21] | .625 [15.87] | .797 [20.24] | 1.250 [31.75] | 1.625 [41.27] | .177 [4.50] | 1.171 [29.74] | .723 [18.36] | .780 [19.81] |
| 22 | 1.5000-0.1P-0.2L-DS | .953 [24.21] | .625 [15.87] | .797 [20.24] | 1.375 [34.92] | 1.750 [44.45] | .177 [4.50] | 1.296 [32.92] | .723 [18.36] | |
| 24 | 1.7500-0.1P-0.2L-DS | 1.047 [26.59] | .594 [15.09] | .859 [21.82] | 1.562 [39.67] | 2.000 [50.80] | .177 [4.50] | 1.421 [36.09] | .660 [16.76] | .686 [17.42] |
| 28 | 2.0000-0.1P-0.2L-DS | 1.047 [26.59] | .594 [15.09] | .859 [21.82] | 1.750 [44.45] | 2.250 [57.15] | .177 [4.50] | 1.625 [41.27] | .660 [16.76] | |
| 32 | 2.2500-0.1P-0.2L-DS | 1.110 [28.19] | .531 [13.49] | .922 [23.42] | 1.938 [49.23] | 2.500 [63.50] | .209 [5.31] | 1.891 [48.03] | .540 [13.72] | .622 [15.80] |
| 36 | 2.5000-0.1P-0.2L-DS | 1.110 [28.19] | .531 [13.49] | .922 [23.42] | 2.188 [55.58] | 2.750 [69.85] | .209 [5.31] | 2.078 [52.78] | .540 [13.72] | .622 [15.80] |
| 40 | 2.7500-0.1P-0.2L-DS | 1.110 [28.19] | .531 [13.49] | .922 [23.42] | 2.375 [60.32] | 3.000 [76.20] | .209 [5.31] | 2.312 [58.72] | .540 [13.72] | .622 [15.80] |
| 44 | 3.0000-0.1P-0.2L-DS | 1.110 [28.19] | .531 [13.49] | .922 [23.42] | 2.625 [66.67] | 3.250 [82.55] | .209 [5.31] | 2.562 [65.07] | .540 [13.72] | .622 [15.80] |

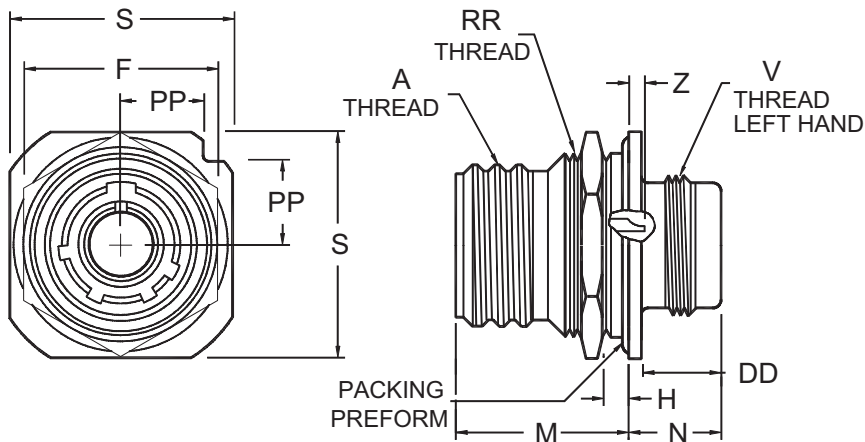
Dimensions in brackets [] are in millimeters.

② For size 0 contacts only, increase Z dimension by .312 [7.92] for shell sizes 12 thru 40, and by .062 [1.57] for shell size 44.

7A

JAM NUT RECEPTACLE SWLD SERIES

SCP1943
SCP17347



SCP1943* Environmental
SCP17347* Environmental

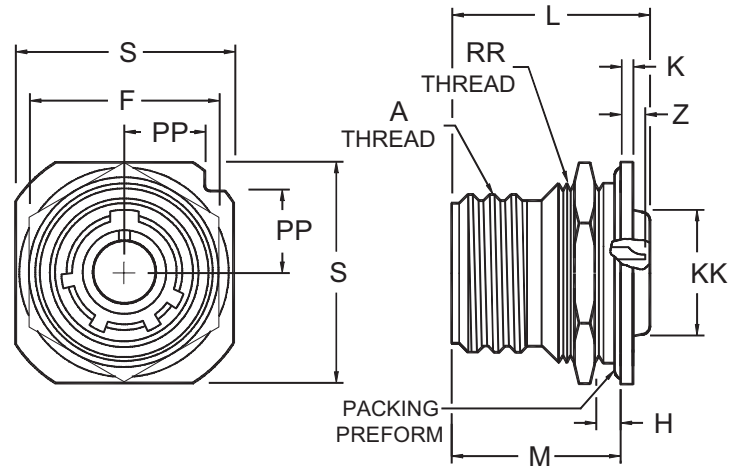
| SHELL SIZE | A THREAD CLASS 2A-DS | F HEX +.017 -.016 [+0.43] [-0.41] | H PANEL THICKNESS | | M ±.010 [±0.25] | N +.021 -.020 [+0.53] [-0.51] | S | V THREAD CLASS 2A-LH | Z | | DD | PP +.011 -.010 [+0.28] [-0.25] | RR THREAD CLASS 2A-RH | PACKING PREFORM MS29513- |
|------------|----------------------|---|-------------------|----------------|--------------------|--|------------------|----------------------|-----------------|-----------------|-----------------|---|-----------------------|--------------------------|
| | | | MIN. | MAX. | | | | | MAX. | MIN. | | | | |
| | | | | | | | | | ② | (SIZE 0 ONLY) | | | | |
| 12 | .875-0.1P-0.2L | 1.250 [31.75] | .094 [2.39] | .188 [4.78] | 1.141 [28.98] | .641 [16.28] | 1.375 [34.92] | .750-20UNEF | .523 [13.28] | NA | .516 [13.11] | .486 [12.34] | 1.000-20UNEF | 24 |
| 14 | 1.000-0.1P-0.2L | 1.312 [33.32] | .094 [2.39] | .188 [4.78] | 1.141 [28.98] | .641 [16.28] | 1.500 [38.10] | .875-20UNEF | .523 [13.28] | NA | .516 [13.11] | .530 [13.46] | 1.125-18NEF | 26 |
| 16 | 1.125-0.1P-0.2L | 1.500 [38.10] | .094 [2.39] | .188 [4.78] | 1.141 [28.98] | .703 [17.86] | 1.750 [44.45] | 1.000-20UNEF | .523 [13.28] | NA | .516 [13.11] | .623 [15.82] | 1.250-18NEF | 127 |
| 18 | 1.250-0.1P-0.2L | 1.562 [39.67] | .094 [2.39] | .203 [5.16] | 1.156 [29.36] | .703 [17.86] | 1.875 [47.62] | 1.125-18NEF | .508 [12.90] | NA | .516 [13.11] | .663 [16.84] | 1.375-18NEF | 129 |
| 20 | 1.375-0.1P-0.2L | 1.750 [44.45] | .094 [2.39] | .203 [5.16] | 1.156 [29.36] | .703 [17.86] | 2.000 [50.80] | 1.250-18NEF | .508 [12.90] | .582 | .516 [13.11] | .707 [17.96] | 1.500-18NEF | 131 |
| 22 | 1.500-0.1P-0.2L | 1.875 [47.62] | .094 [2.39] | .203 [5.16] | 1.156 [29.36] | .703 [17.86] | 2.125 [53.97] | 1.375-18NEF | .508 [12.90] | [14.78] | .516 [13.11] | .751 [19.08] | 1.625-18NEF | 133 |
| 24 | 1.750-0.1P-0.2L | 2.125 [53.97] | .094 [2.39] | .265 [6.73] | 1.219 [30.96] | .703 [17.86] | 2.375 [60.32] | 1.625-18NEF | .455 [11.56] | .519 [13.18] | .516 [13.11] | .840 [21.34] | 1.875-16UN | 137 |
| 28 | 2.000-0.1P-0.2L | 2.375 [60.32] | .094 [2.39] | .277 [7.04] | 1.231 [31.27] | .785 [19.94] | 2.625 [66.67] | 1.875-16UN | .433 [11.00] | .507 | .516 [13.11] | .928 [23.57] | 2.125-16UN | 141 |
| 32 | 2.250-0.1P-0.2L | 2.625 [66.67] | .094 [2.39] | .215 [5.46] | 1.231 [31.27] | .785 [19.94] | 2.875 [73.02] | 2.0625-16N | .433 [11.00] | [12.88] | .516 [13.11] | 1.017 [25.83] | 2.375-16UN | 145 |
| 36 | 2.500-0.1P-0.2L | 2.875 [73.02] | .094 [2.39] | .215 [5.46] | 1.231 [31.27] | .785 [19.94] | 3.125 [79.37] | 2.3125-16N | .433 [11.00] | [12.88] | .516 [13.11] | 1.104 [28.04] | 2.625-16UN | 149 |
| 40 | 2.750-0.1P-0.2L | 3.125 [79.37] | .094 [2.39] | .215 [5.46] | 1.231 [31.27] | .972 [24.69] | 3.406 [86.51] | 2.625-16UN | .433 [11.00] | [12.88] | .703 [17.86] | 1.213 [30.81] | 2.875-16UN | 234 |
| 44 | 3.000-0.1P-0.2L | 3.375 [85.72] | .094 [2.39] | .215 [5.46] | 1.231 [31.27] | .972 [24.69] | 3.656 [92.86] | 2.875-16UN | .656 [16.66] | [12.88] | .703 [17.86] | 1.299 [32.99] | 3.125-16UN | 236 |

Dimensions in brackets [] are in millimeters.

② For size 0 contacts only, increase Z dimension by .312 [7.92] for shell sizes 12 thru 40, and by .062 [1.57] for shell size 44.

SWLD SERIES - BOX MOUNT **JAM NUT RECEPTACLE**

SCP1949
SCP17348



SCP1949* Environmental SCP17348* Environmental

| SHELL SIZE | A THREAD CLASS 2A-DS | F HEX +.017 -.016 [+0.43] [-0.41] | H PANEL THICKNESS | | K +.006 -.005 [+0.15] [-0.13] | L +.011 -.010 [+0.28] [-0.25] | M | S MAX. | Z | | ØKK +.011 -.010 [+0.28] [-0.25] | PP +.011 -.010 [+0.28] [-0.25] | RR THREAD CLASS 2A-RH | PACKING PREFORMED MS29513- |
|------------|----------------------------|--|-------------------------|----------------|---|---|------------------|------------------|-----------------|-----------------|---|--|-----------------------------|----------------------------------|
| | | | MIN. | MAX. | | | | | MAX. | MIN. | | | | |
| | | | | | | | | | ② | (SIZE 0 ONLY) | | | | |
| 12 | .875-0.1P-0.2L | 1.250 [31.75] | .094 [2.39] | .297 [7.54] | .125 [3.17] | 1.578 [40.08] | 1.235 [31.37] | 1.375 [34.92] | .429 [10.90] | NA | .640 [16.26] | .486 [12.34] | 1.000-20UNEF | 24 |
| 14 | 1.000-0.1P-0.2L | 1.312 [33.32] | .094 [2.39] | .297 [7.54] | .125 [3.17] | 1.578 [40.08] | 1.235 [31.37] | 1.500 [38.10] | .429 [10.90] | | .765 [19.43] | .530 [13.46] | 1.125-18NEF | 26 |
| 16 | 1.125-0.1P-0.2L | 1.500 [38.10] | .094 [2.39] | .297 [7.54] | .188 [4.78] | 1.578 [40.08] | 1.235 [31.37] | 1.750 [44.45] | .461 [11.71] | | .890 [22.61] | .623 [15.82] | 1.250-18NEF | 127 |
| 18 | 1.250-0.1P-0.2L | 1.562 [39.67] | .094 [2.39] | .266 [6.76] | .188 [4.78] | 1.578 [40.08] | 1.203 [30.56] | 1.875 [47.62] | .461 [11.71] | | 1.015 [25.78] | .663 [16.84] | 1.375-18NEF | 129 |
| 20 | 1.375-0.1P-0.2L | 1.750 [44.45] | .094 [2.39] | .266 [6.76] | .188 [4.78] | 1.578 [40.08] | 1.203 [30.56] | 2.000 [50.80] | .461 [11.71] | .535 [13.59] | 1.171 [29.74] | .707 [17.96] | 1.500-18NEF | 131 |
| 22 | 1.500-0.1P-0.2L | 1.875 [47.62] | .094 [2.39] | .266 [6.76] | .188 [4.78] | 1.578 [40.08] | 1.203 [30.56] | 2.125 [53.97] | .461 [11.71] | | 1.296 [32.92] | .751 [19.08] | 1.625-18NEF | 133 |
| 24 | 1.750-0.1P-0.2L | 2.125 [53.97] | .094 [2.39] | .328 [8.33] | .188 [4.78] | 1.641 [41.68] | 1.266 [32.16] | 2.375 [60.32] | .398 [10.11] | .472 [11.99] | 1.421 [36.09] | .840 [21.34] | 1.875-16UN | 137 |
| 28 | 2.000-0.1P-0.2L | 2.375 [60.32] | .094 [2.39] | .328 [8.33] | .219 [5.56] | 1.641 [41.68] | 1.329 [33.76] | 2.625 [66.67] | .335 [8.51] | | 1.625 [41.27] | .928 [23.57] | 2.125-16UN | 141 |
| 32 | 2.250-0.1P-0.2L | 2.625 [66.67] | .094 [2.39] | .328 [8.33] | .219 [5.56] | 1.641 [41.68] | 1.329 [33.76] | 2.875 [73.02] | .335 [8.51] | .409 [10.39] | 1.891 [48.03] | 1.017 [25.83] | 2.375-16UN | 145 |
| 36 | 2.500-0.1P-0.2L | 2.875 [73.02] | .094 [2.39] | .328 [8.33] | .219 [5.56] | 1.641 [41.68] | 1.329 [33.76] | 3.125 [79.37] | .335 [8.51] | | 2.078 [52.78] | 1.104 [28.04] | 2.625-16UN | 149 |
| 40 | 2.750-0.1P-0.2L | 3.125 [79.37] | .094 [2.39] | .328 [8.33] | .219 [5.56] | 1.641 [41.68] | 1.329 [33.76] | 3.406 [86.51] | .335 [8.51] | .409 [10.39] | 2.312 [58.72] | 1.213 [30.81] | 2.875-16UN | 234 |
| 44 | 3.000-0.1P-0.2L | 3.375 [85.72] | .094 [2.39] | .328 [8.33] | .219 [5.56] | 1.641 [41.68] | 1.329 [33.76] | 3.656 [92.86] | .562 [14.27] | | 2.562 [65.07] | 1.299 [32.99] | 3.125-16UN | 236 |

Dimensions in brackets [] are in millimeters.

② For size 0 contacts only, increase Z dimension by .312 [7.92] for shell sizes 12 thru 40, and by .062 [1.57] for shell size 44.

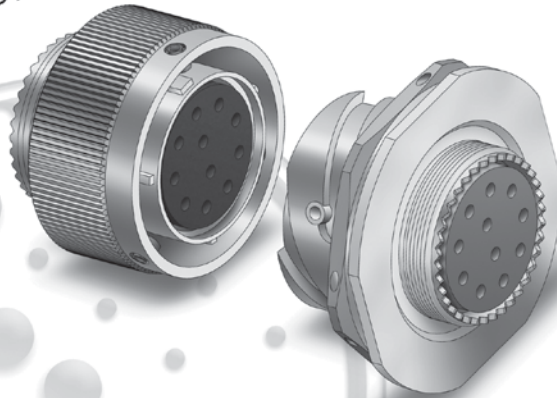
7A

We've Got You Covered

SPACECRAFT COMPONENTS CORP.
Your Connector Consultant Since 1962

SCPB39 SERIES

A REVERSE BAYONET COUPLING
DESIGNED AROUND
MIL-DTL-38999 INSERT ARRANGEMENTS



- ▶ Uses M39029 Contacts & Tools
- ▶ Uses M85049 Accessories
- ▶ Coupling provides a positive lock with an audible "Click" in 1/3 turn of the coupling nut
- ▶ Same footprint as MIL-STD-38999 Series III Square Flange Receptacle Shells & Plugs
- ▶ EMI/RFI Shell-to-Shell Grounding

 **SPACECRAFT**
COMPONENTS CORP.

Contact
Spacecraft's
Consultative Sales Team
for Ordering Information



YOUR
**CONNECTOR
CONSULTANT**
SINCE 1962

 **SPACECRAFT**
COMPONENTS CORP.

702.851.7600

SECTION 8A SWLD SERIES

CONNECTOR ACCESSORY QUICK REFERENCE

(FOR COMPLETE DETAILS ON THESE PARTS SEE **SPACECRAFT CATALOG 401**)

| ACCESSORY | PART NUMBER |
|--|-------------|
| BACKSHELLS, ENVIRONMENTAL | |
| STRAIGHT - CABLE SEALING ADAPTER | B002A-AK |
| | B002B-AK |
| STRAIGHT - CABLE SEALING GLAND | B049AK03 |
| | B049AK04 |
| | B049AK05 |
| STRAIGHT - FOR ANAMET CONDUIT | B031*AK |
| STRAIGHT - FOR PG ADAPTER | B033*AK |
| STRAIGHT - FOR PIPE THREAD (PT) ADAPTERS | B035*AK |
| STRAIGHT - FOR SEALTITE™ LIQUIDTITE CONDUIT | B037*AK |
| 45° CABLE SEALING GLAND | B002CC-AK |
| 90° CABLE SEALING GLAND | B002D-AK |
| BACKSHELLS, SHORTING CANS | |
| | B012*AK |
| | B013*AK |
| BACKSHELLS, STRAIN RELIEFS/CABLE CLAMPS | |
| CABLE CLAMP | MS3057-*B |
| | MS3057-*C |
| INDIVIDUAL WIRE SEALING | SCP74191-* |

| ACCESSORY | PART NUMBER |
|--|-------------|
| BACKSHELLS, SHRINK BOOT ADAPTERS | |
| STRAIGHT BOOT ADAPTER | B006A-AK |
| | B006B-AK |
| | B049AK59 |
| DUMMY RECEPTACLES | |
| | DRP02 |
| | SCP18062-* |
| DUST CAPS | |
| METAL, FOR PLUG | DCP02 |
| | SCP17350-* |
| METAL, FOR RECEPTACLE | DCR02 |
| | SCP17349-* |
| GASKET FOR FLANGE MOUNT RECEPTACLES | |
| | SCP36675-* |
| | SCP40450-* |
| MOUNTING PLATES | |
| | NOTE 1 |
| RUBBER BUSHINGS | |
| | MS3420-*A |

* Additional alpha-numeric are required to complete part number.
1. Contact sales department for part numbers and availability.

8A

We've Got You Covered



Contact
Spacecraft's
Consultative Sales Team
for Ordering Information

Quality Manufacturing
in AMERICA 

YOUR
**CONNECTOR
CONSULTANT**
SINCE 1962

 **SPACECRAFT**
COMPONENTS CORP.

702.851.7600

We've Got You Covered



Contact
Spacecraft's
Consultative Sales Team
for Ordering Information



YOUR
**CONNECTOR
CONSULTANT**
SINCE 1962

 **SPACECRAFT
COMPONENTS CORP.**

702.851.7600

SPACECRAFT COMPONENTS CORP.

Your Connector Consultant Since 1962



SCP 5015 STYLE CONNECTORS (CATALOG 102)



SCPT 26482 STYLE SC1 38999 SERIES I SC2 38999 SERIES II SC39 38999 SERIES III (CATALOG 202)



SCPB SERIES (CATALOG 302)



CONNECTOR ACCESSORIES (CATALOG 402)



CONNECTORS WITH INTEGRATED BACKSHELLS (CATALOG 601)

Try our other connector products.

COMING SOON...
All Plastic Connectors
CATALOG 701



SPACECRAFT COMPONENTS CORP.

Headquarters

3040 Clayton Street
North Las Vegas, NV 89032

Phone: 702.851.7600
Fax: 702.851.7620

Email: salesinfo@spacecraft.com
Web: www.spacecraft.com

Florida Office

4577 Nob Hill Road
Suite 106
Sunrise, FL 33351
Tel: 954.748.4540
Fax: 954.748.4128

Italy Office

9UgYfb 7 cbbYWrcf
)** 8UbVi fmFX
BYk 'A]Zc fXz7 H\$*++
Tel: , *\$!')!) , %\$\$
Fax: , *\$!') \$!) (%

Italy Office

Spacecraft Components, sp A
Milan, Italy
+39 (335) 719.4512

Mexico Office

Av. Constituyentes 13-6 Col. Pueblo Nuevo
Queretaro, Qro 76900
+52 442 341 69 63

CAT-102 10.12